

# Experiential Learning



Faculty of  
**Social Sciences**  
The University of Hong Kong

香港大學社會科學學院

社  
科  
人  
Socien<sup>ti</sup>st



# What is **Experiential Learning?**





**Experiential Learning** is particularly essential to achieve the missions and objectives of teaching and learning of the Faculty of Social Sciences to **produce** students with a **global perspective** who are **critical thinkers**, **socially aware**, ready to **embrace diversity** and seek to **make an impact on society**.





## WORK TO LEARN, LEARN TO WORK



# About Experiential Learning...



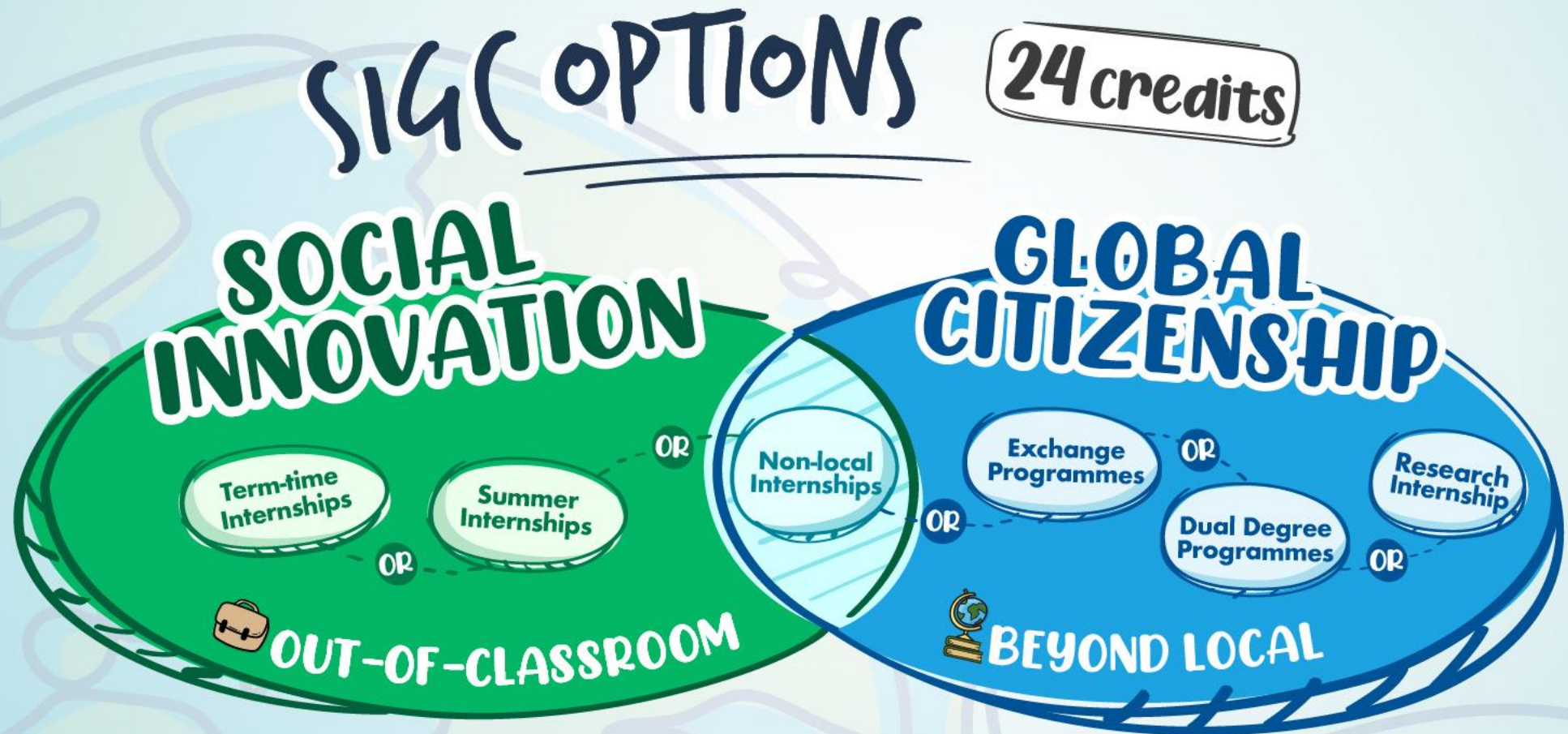
The Faculty has adopted two overarching themes of the non-paid, off-campus experiential learning for its undergraduate curricula: **Social Innovation (SI)** and **Global Citizenship (GC)** since 2008.

In addition to **local and non-local placement-based internships**, the Faculty has coordinated various kinds of experiential learning programmes for Social Sciences students, including **interdisciplinary-based projects, research internships and exchange programmes.**



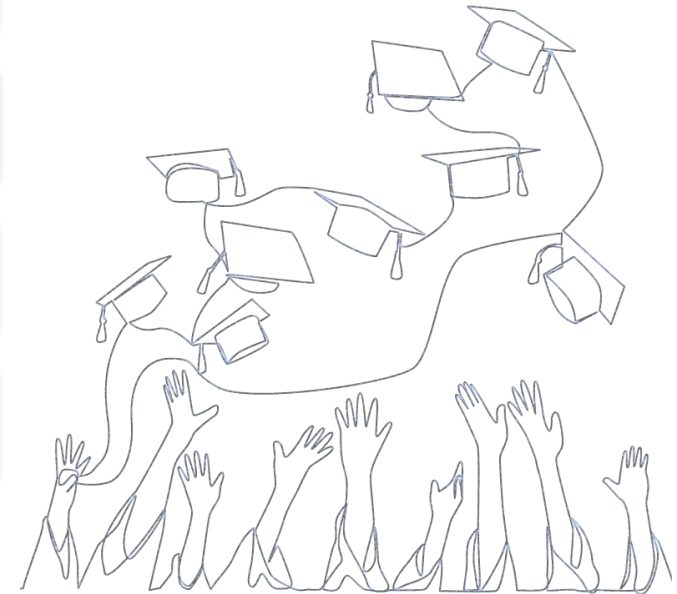


# SIGC Graduation Requirement



# Curriculum Graduation Requirement \*^

BJ	Global Citizenship (12 credits) #
BSocSc	Social Innovation <u>and</u> Global Citizenship (24 credits)
BSocSc(Govt&Laws)	Social Innovation <u>or</u> Global Citizenship (12 credits)
BSocSc(Govt&Laws)&LLB	Social Innovation <u>or</u> Global Citizenship (12 credits)
BPsych	Social Innovation <u>and</u> Global Citizenship (24 credits)



\* Students are strongly recommended to complete the graduation requirement on or before the second semester of their final year of studies.

^ BSW students can enroll courses under Social Innovation and Global Citizenship as free elective.

# BJ students can enroll the course under Social Innovation as free elective

# Social Innovation

- Credit-bearing, non-paid internship, learning in community
- Required for students in BSocSc and BPsych curriculums
- Optional for students in BSocSc(Govt&Laws) and BSocSc(Govt&Laws)&LLB curriculums (either SI or GC)
- Designed to stretch, not primarily vocational
- A variety of Community Partners: local and international NGOs, think-tanks, political parties and social enterprises, etc.

## Local Internships (term-time / summer)

Local Internships organised or approved by Faculty  
(term-time spreading across two semesters / 8 weeks in summer)

## Non-local Internships (summer)

Overseas internships organised or approved by Faculty  
(8 weeks in summer)

## Project-based Internships

Project-based Internships organised or approved by Faculty, e.g. GLoCal Projects, Global Bay Areas Impact Lab  
(8 weeks in summer)

## Psychology Field Placement

Field Placement in different fields of Psychology organised or approved by Faculty  
(term-time spreading across two semesters / 8 weeks in summer)



# Global Citizenship

- Credit bearing, out of Hong Kong academic experience
- Required for students in BJ, BSocSc, BPsych curriculums
- Optional for students in BSocSc(Govt&Laws) and BSocSc(Govt&Laws)&LLB curriculums (either SI or GC)
- Many programmes to choose from



## Exchange Programmes (1 semester to 1 year)

Overseas exchange programmes under University-level, Faculty-level or Departmental-level

## Project-based/ Non-local Placement- based Internships

Project-based / Overseas placement-based internships organised or approved by Faculty, e.g. GLoCal, GC@Home, Global Bay Areas Impact Lab

## Research Internships

Globalink Research Internship (GRI) in Canada (12 weeks) or Laidlaw Scholars Programme (8-10 weeks) hosted by UK institutions

## Dual Degree Programme (BSocSc + MA)

3 years at HKU and 2 years at Geneva

# Student-initiated Internships

- Apart from the opportunities arranged by the Faculty, students may propose internship opportunity that fits their interests and strengths
- Students should receive formal approval from the Faculty before the start of student-initiated internship
- No retrospective internship will be considered

**Application for Summer 2026 will open in September**

**Stay tuned!**



Go out.....



See the world.....





Go out.....



See the world.....





# General Enquiries



Tel: (852) 3917 1212 | Email: [socii@hku.hk](mailto:socii@hku.hk)

Website: <https://www.socsc.hku.hk/sigc/>

